

Juanita Lake

Foster County

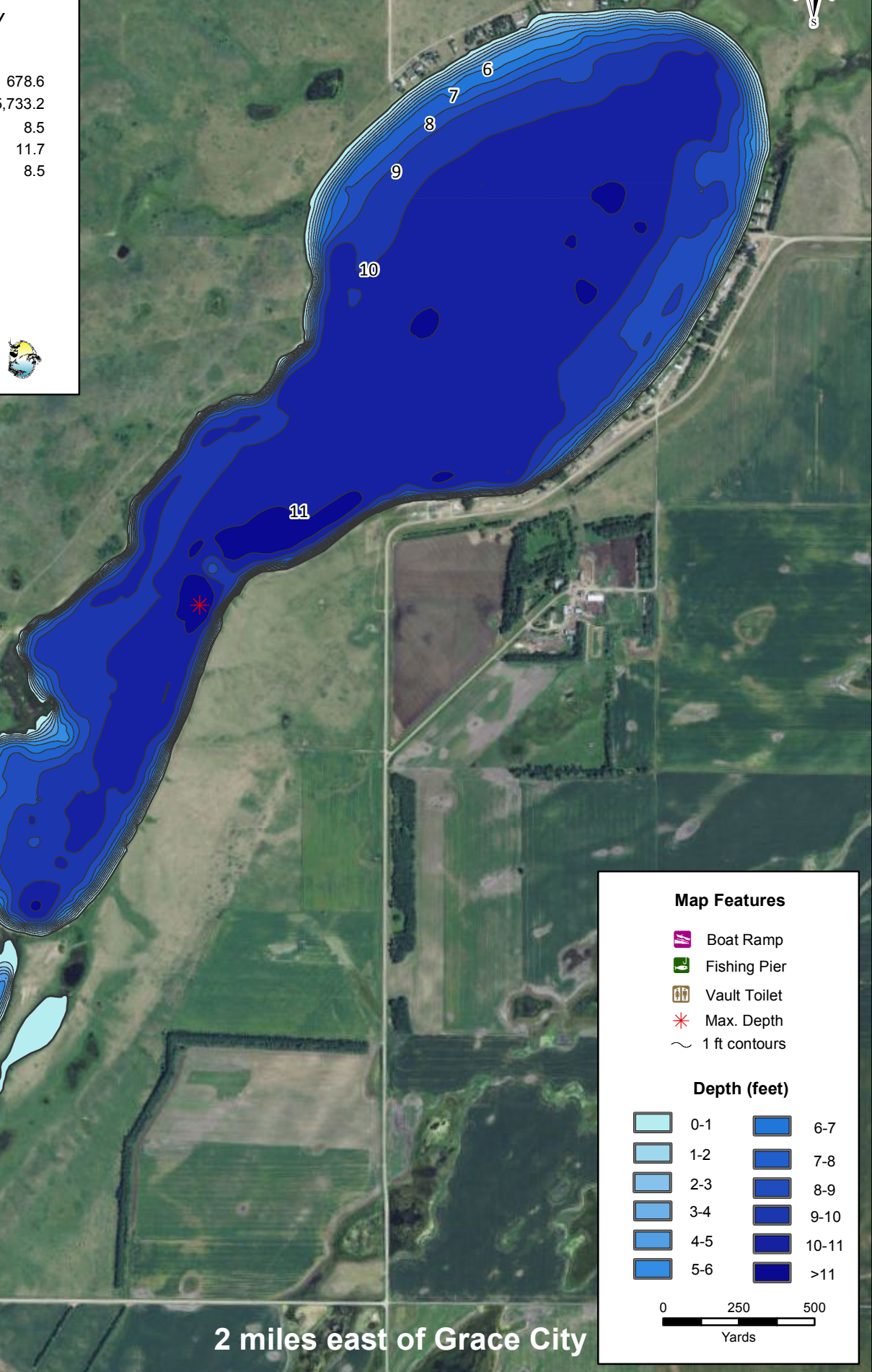
Lake Statistics

Surface Area (acres)	678.6
Volume (acre/feet)	5,733.2
Average Depth (feet)	8.5
Max Depth (feet)	11.7
Shoreline (miles)	8.5

** Based on Full Pool Elevation



North Dakota Game and Fish Department
2010-11 Fisheries Division
NDGF-GIS-2147 - Weigel

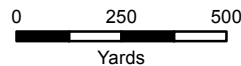


Map Features

- Boat Ramp
- Fishing Pier
- Vault Toilet
- Max. Depth
- 1 ft contours

Depth (feet)

	0-1		6-7
	1-2		7-8
	2-3		8-9
	3-4		9-10
	4-5		10-11
	5-6		>11



2 miles east of Grace City