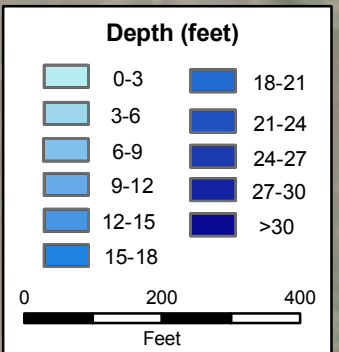
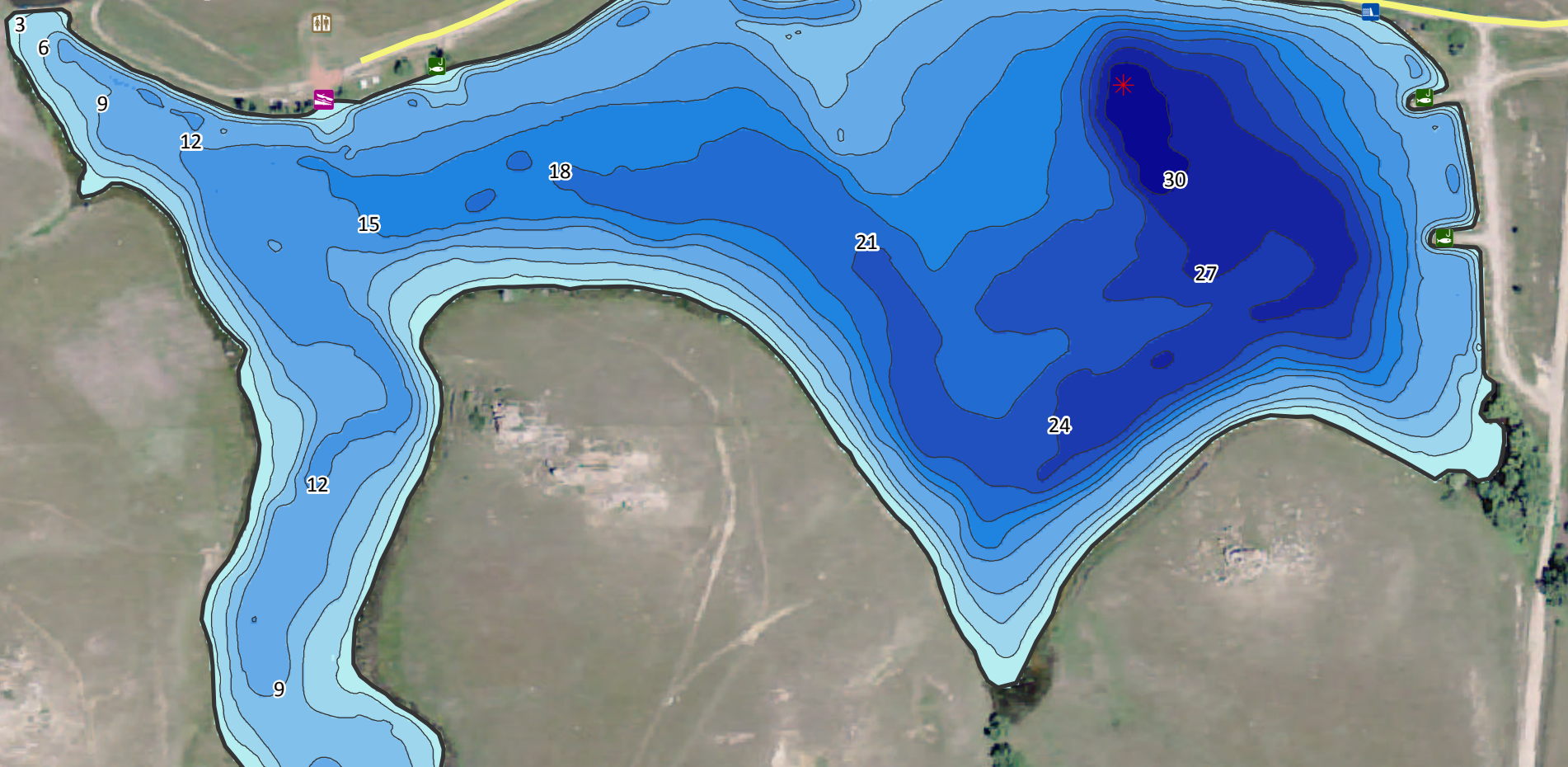


5 miles north of Lemmon, South Dakota



# North Lemmon Lake

Adams County

### Lake Statistics

Surface Area (acres)	44.9
Volume (acre/feet)	613.8
Average Depth (feet)	13.6
Max Depth (feet)	31.4
Shoreline (miles)	1.9

\*\* Based on Full Pool Elevation



North Dakota Game and Fish Department  
2009-10 Fisheries Division  
NDGF-GIS-2309042 - Weigel

### Map Features

- Boat Ramp
- Fishing Pier
- Vault Toilet
- Water Control
- Max. Depth
- 3 ft contours