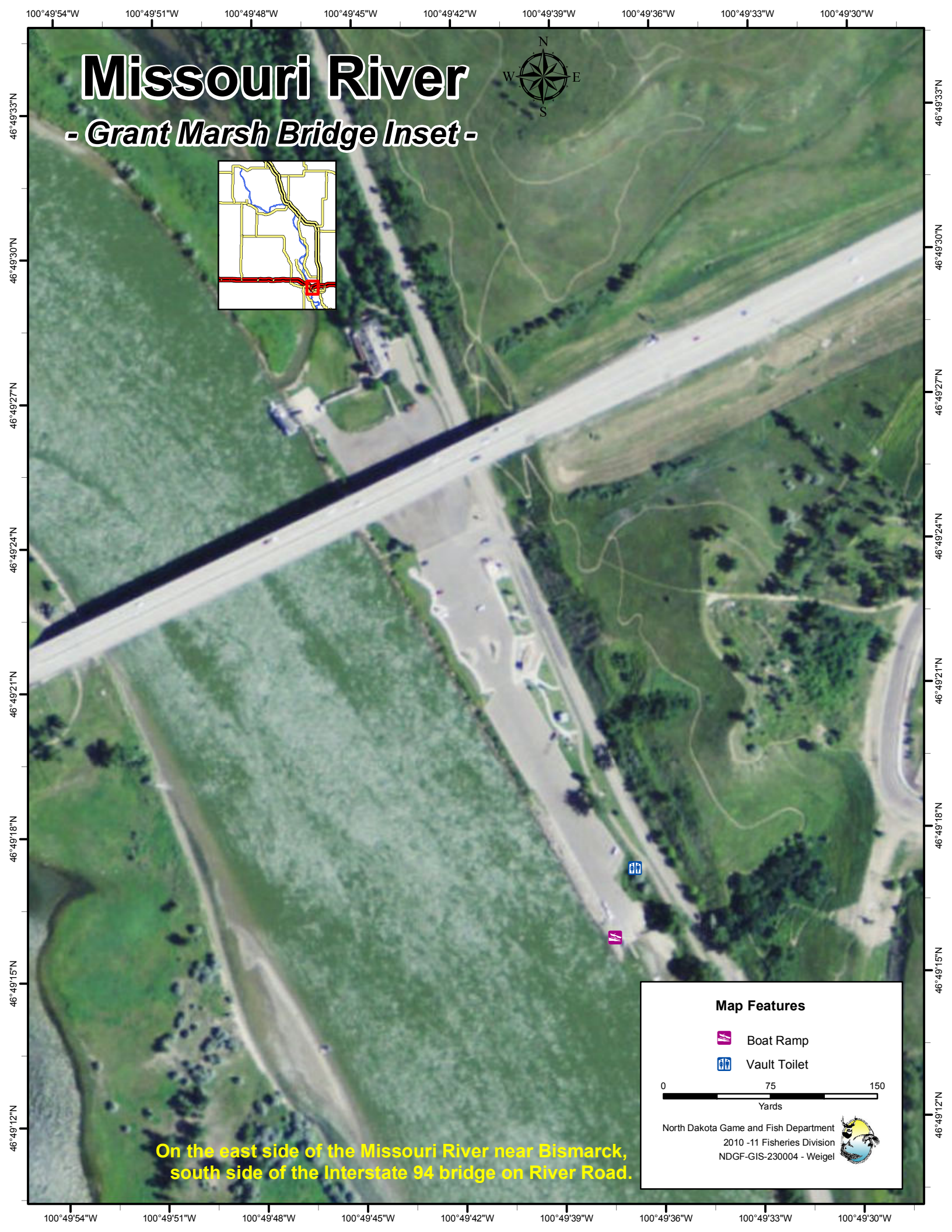
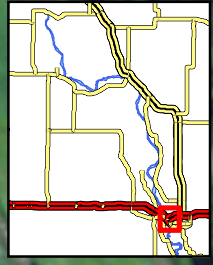




Missouri River

- Grant Marsh Bridge Inset -




Map Features

-  Boat Ramp
-  Vault Toilet

0 75 150
Yards

North Dakota Game and Fish Department
2010 -11 Fisheries Division
NDGF-GIS-230004 - Weigel



On the east side of the Missouri River near Bismarck, south side of the Interstate 94 bridge on River Road.

100°49'54"W 100°49'51"W 100°49'48"W 100°49'45"W 100°49'42"W 100°49'39"W 100°49'36"W 100°49'33"W 100°49'30"W

46°49'33"N 46°49'30"N 46°49'27"N 46°49'24"N 46°49'21"N 46°49'18"N 46°49'15"N 46°49'12"N